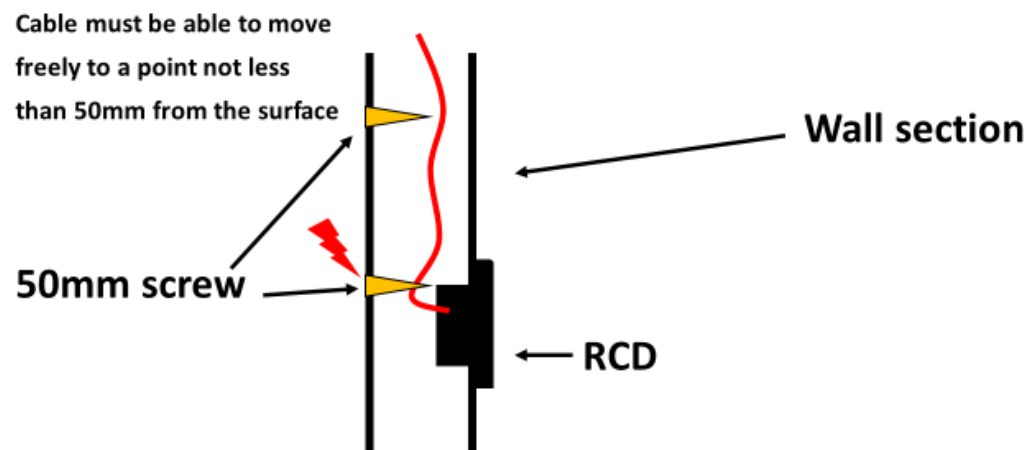


## □ Mechanical protection AS/NZS 3000



11

Line side RCD cables installed in a patient area shall be protected against mechanical damage in accordance with AS/NZS 3000 – clause 3.9.4.2

Specifically wiring that is concealed within 50mm from the building surface.

This requirement need not apply to wiring systems that can move freely to a point not less than 50mm from the surface in the event of a nail or screw penetrating the cavity at the location of the wiring system.

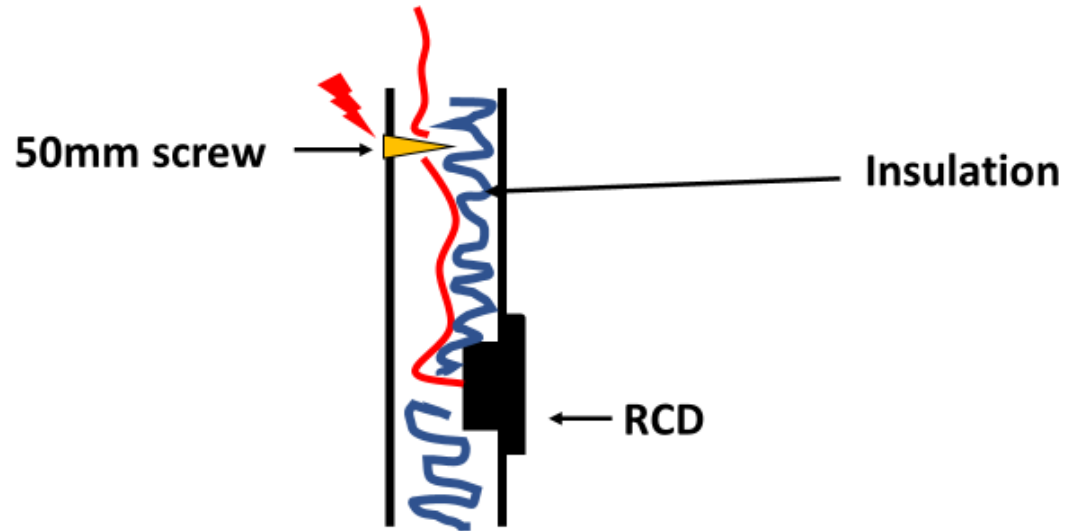
**Where protection of a wiring system is required, in accordance with clause 3.9.4.2, the wiring system shall be –**

**(a) Provide with adequate mechanical protection at a minimum of WSX3 to prevent damage (refer to Paragraph H5.4, Appendix H);**

**or**

**(b) Provided with an earthed metallic armouring, screen, covering or enclosure, to operate a short circuit protective device under fault conditions.**

❑ *Mechanical protection of line side cabling*

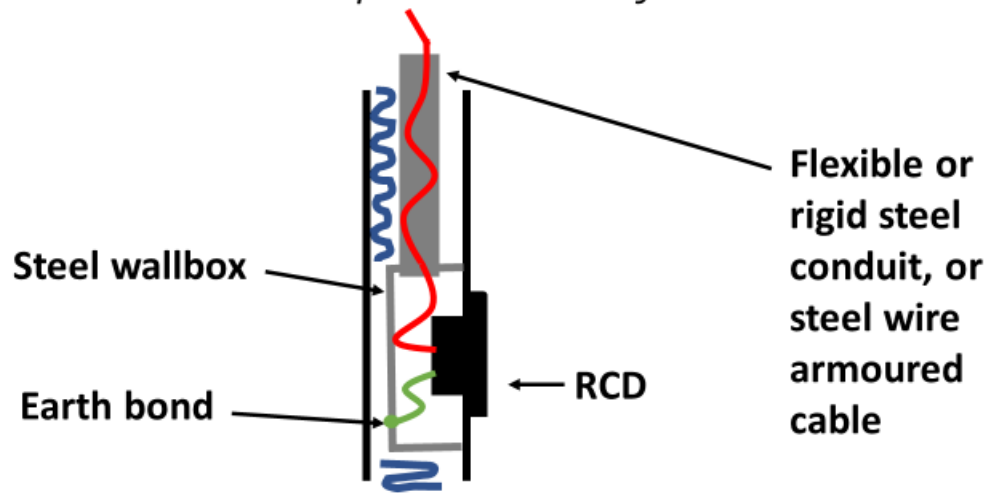


8

Wiring systems that are held in position by insulation or by passing through an opening in a structural member, shall be mechanically protected if they cannot move freely to a depth of 50mm.

## Option 1

### □ Mechanical protection of line side cabling



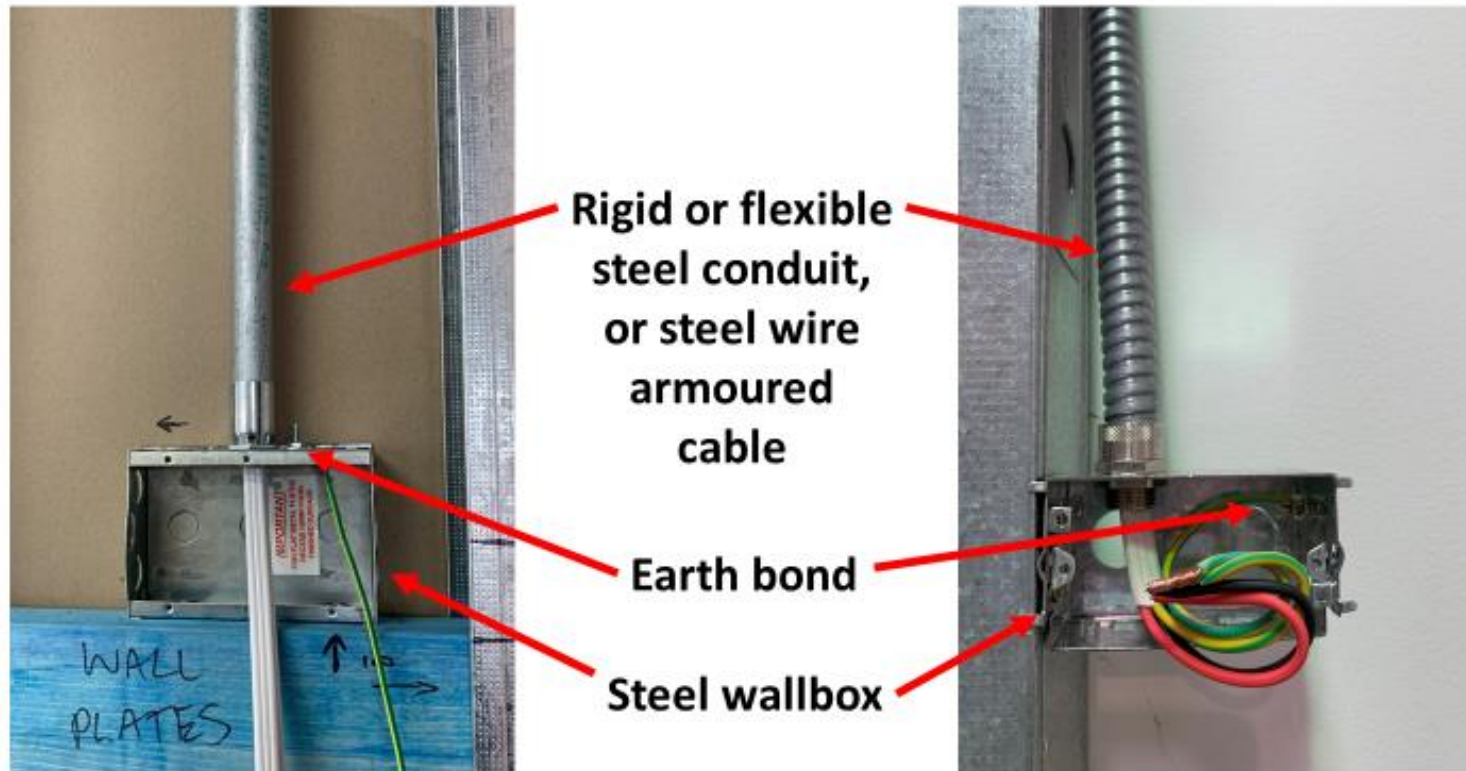
11

Where protection of a wiring system is required, the wiring shall be:

- **Provided with an earthed metallic screen, covering, enclosure or armouring, to operate a short circuit protective device under fault conditions (shown above).**

## Option 1

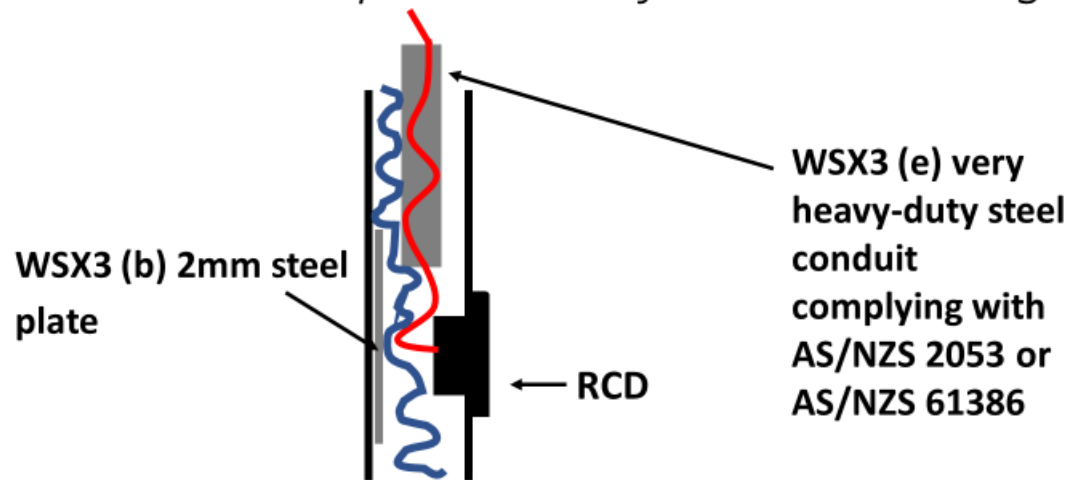
### ❑ *Mechanical protection of line side cabling*



Provided with an **earthed metallic screen, covering, enclosure or armouring**, to operate a short circuit protective device under fault conditions.

## Option 2

### □ Mechanical protection of line side cabling



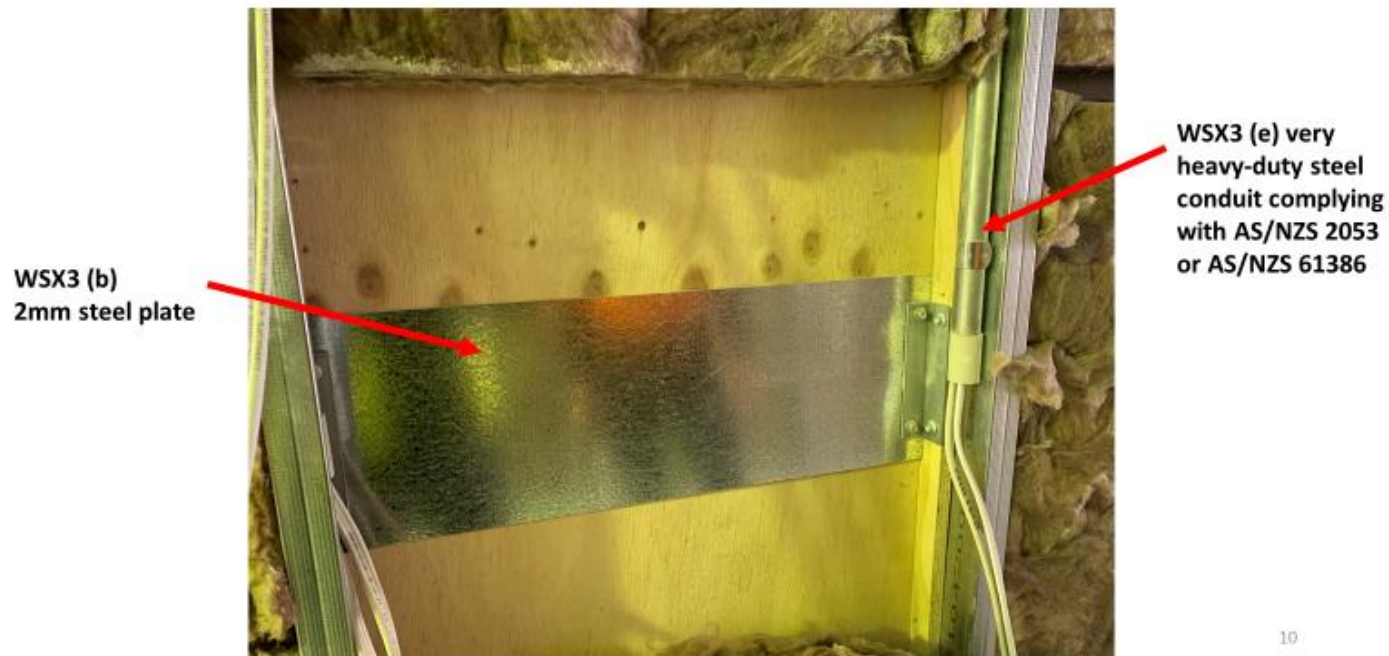
9

Where protection of a wiring system is required, the wiring shall be:

- **Provided with adequate mechanical protection at a minimum of WSX3 (refer Table H5.4 AS/NZS 3000, option b) and e) shown above).**

## Option 2

### ☐ *Mechanical protection of line side cabling*



Mechanical protection at a minimum of **WSX3** (refer Table H5.4 AS/NZS 3000):

- (b) Additional 2mm sheet steel coverage
- (e) Very heavy-duty steel conduit complying with AS/NZS 2053 or AS/NZS 61386 (hot dipped galvanized)